



**SWD**  
B E S P O K E

*Luxury Doors for the Finest Homes*



# *Luxury Doors for the Finest Homes*



We'd love to discuss your project in person and help bring your ideas to life; we offer extensive knowledge and expertise in both technical and design aspects to ensure we create the best possible outcome for your project.

To discuss your requirements in more detail or book an appointment to visit our impressive 2,500sq ft showroom please contact us using the details below:



01932 851081



[sales@swdbespoke.com](mailto:sales@swdbespoke.com)



15 Island Farm Avenue,  
West Molesey, Surrey, KT8 2UZ, UK



[@swdbespoke](https://www.instagram.com/swdbespoke)



# Welcome



SWD Bespoke is a British family owned company founded by Anthony Cope in 2005, with the aspiration to offer custom and unique solutions to clients looking for the finest quality doors and hardware.

I am often asked by our clients “why did I set up a door business?” The answer is that my background for over 20 years was in graphic and website design; my company at the time, APC Design, launched a door handle and ironmongery website called [handleanything.com](http://handleanything.com), long before many others had thought of it. After a few years I realised that there was a gap in the market for high quality doors as well. I decided to swap out my skills from designing marketing material to designing doors. The rest is history as they say!

My firm belief from the very beginning was that doors should be a piece of furniture and an integral part of the interiors of any home. We have established a reputation for luxury and innovation, pushing the boundaries of door design, sizes and finishes, with an extensive range of bespoke finishes and designs that you will not find anywhere else on the market.

Our exceptional portfolio of products can be complemented by our solid brass bespoke hardware which has been developed to accentuate the designs in our collections. Every order is made to your exact specification, giving you the confidence that your new doors will be the perfect fit for your project, right down to the hardware.

We use only the best materials along with the latest state of the art technology to achieve exceptional standards and lasting quality that will add great value to projects of any scale.



# A Family-Run Business

Tony and his three children work closely together with their tight-knit team and together bring a wealth of knowledge and experience, combined with a desire to meet our clients' needs and ultimately bring their visions to life. The rest of the team can be seen on our website in the Meet the Team page.



Left to right:  
Tony, Olivia, Charlotte and Alex Cope







## Showroom

There is no better way to truly experience our doors and hardware than in person, so we welcome you to visit our 2,500sq ft showroom in Surrey, which is always being updated to ensure we have the latest designs and trends on display. During your visit you will experience our extensive range of bespoke door sets, covering our most popular and on-trend collections, which range from standard sized doors up to 2.7m tall. You will also be able to view sliding doors, bi-folding doors, frameless doors and an acoustic 60mm thick door – all in an array of finishes including our renowned high gloss 'piano' finish. In addition to the above, we also have our external high security door models on display, so you will be able to visit our showroom and leave no stone unturned in relation to your new doors. Our knowledgeable staff are available to discuss your project with a unique one-to-one service from initial design conception to the finished product. We also have an in-house interior designer on hand to assist with any design questions you may have.

## International Projects

We supply to projects all over the UK and also work in close partnership with many clients across the globe. Our portfolio includes substantial projects in locations such as America, the Middle East, Europe, Africa and the Caribbean, including Monte Carlo, Dubai and Newport Beach to name a few. No matter the distance, we are able to assist with the design conception and on-site measurements, both virtually and in-person, to ensure a hands on approach from start to finish.



Newport Beach, California





Door Collections

- 06 Classic
- 40 Lattice
- 50 Lacada
- 62 Designer
- 74 Urban
- 86 Natural

Panel Styles

- 38 Beading & Panel Profiles
- 95 Glazing



Door Sets

- 98 Made to Measure
- 99 Door Set Frame & Ironmongery
- 100 Veneered Architrave & Skirting
- 102 MDF & Solid Wood Skirting & Architrave



Door Systems

- 106 Sliding Doors
- 108 Frameless Doors
- 109 Acoustic Doors
- 110 PAS24 Doors
- 111 Wardrobe Doors





## Finishes

- 114** Natural & Man-Made Wood
- 115** Stained Wood
- 116** Lacquers
- 117** High Gloss



## Hardware

- 120** SWD Bespoke Hardware
- 124** Bespoke Service & Renders
- 126** Bespoke Hardware Projects
- 128** Plated Finishes



## Contact

- 130** Design Consultation



# Classic

This collection embodies traditionalism with an array of panelled door designs to help you capture your chosen historical period. The various panelled configurations can come with raised & fielded, flat or glazed panels. The overall look of a door can be altered by the panel and beading style selected. Add a contemporary touch with a flat panel and square edged beading, or a moulded beading with raised panels to keep it traditional. All doors from this range can be supplied primed for onsite painting or in many natural veneers as well as stained finishes, high gloss and lacquer.



**MODEL:** R137, Flat Panels, PCA Beading  
**FINISH:** T-122 Stain on Walnut





**MODEL:** R109-A7, Glazed Panels, ES3 Beading  
**FINISH:** T-124 Stain on Oak









**MODEL:** R133, Flat Panels, PCR & Inner Decorative Beading  
**FINISH:** RAL 9003 Lacquer

“ This beautiful apartment refurbishment project in Kensington, London was supplied with our model R109 up to 2550mm in height, and beautiful bespoke architraves, plinth and corner blocks. We worked closely alongside the architect whose innovative ideas truly transformed the space! ”

**MODEL:** R109, Glazed Panels, ES3 Beading  
**FINISH:** NCS S 0500-N Lacquer with Grain Showing







**MODEL:** R136, Raised Panels, PCR Beading  
**FINISH:** White Primed & Painted on Site







**MODEL:** R108, Glazed Panels, ES3 Beading  
**FINISH:** T-124 Stain on Walnut









**MODEL:** R137, Flat Panels, PCA Beading **FINISH:** T-122 Stain on Walnut  
**ARCHITRAVE:** Elizabethan in Solid Walnut with Plinth Blocks

**MODEL:** R101, Flat & Glazed Panels, PCA Beading  
**FINISH:** T-122 Stain on Walnut







**MODEL:** R108, Raised Panels, PPA Beading  
**FINISH:** Wenge Stain on Oak





“*This unique circular door style will add a unique feature to any room, and can be seen in the suites of the Beverley Hills Hotel.*”







**MODEL:** N311, Raised & Glazed Panels, PCA Beading  
**FINISH:** RAL 9003 Lacquer







**MODEL:** R100-A12    **FINISH:** White Primed & Painted on Site  
**HARDWARE:** Bespoke Push Plate, Matt Dark Bronze







Close up of bespoke lever & hotel fob entry

“ *High quality overhead concealed door closers were used throughout the hotel and the bedroom doors were 32db with drop down seals. All items were machined at the factory.* ”

**MODEL:** R104, Raised Panels, PCA Beading  
**FINISH:** White Primed & Painted on Site  
**HARDWARE:** Bespoke Lever and Turn & Release















**MODEL:** R108ALP, Flat Panels, PCA Beading  
**FINISH:** RAL 9005 High Gloss, Polished Aluminium Inlays



**MODEL:** N312, Flat Panels, PCA Beading  
**FINISH:** RAL 9003 High Gloss  
**ARCHITRAVE:** Ogee





**MODEL:** R108ALP, Flat Panels, ES3 Beading    **FINISH:** RAL 9005 High Gloss, Polished Aluminium Inlays  
**ARCHITRAVE:** SW3 with Plinth & Corner Blocks





**MODEL:** R137, Flat Panels, PCA Beading  
**FINISH:** T-122 Stain on Walnut









**MODEL:** N312, Raised Panels, PCA Beading  
**FINISH:** Walnut





**MODEL:** N312, Glazed Panels, PCA Beading  
**FINISH:** Walnut



**MODEL:** N312, Glazed Panels, PCA Beading  
**FINISH:** Wenge Stain on Oak





**MODEL:** R101, Raised Panels, PPA Beading  
**FINISH:** Walnut





**MODEL:** R106, Flat Panels, RB Beading  
**FINISH:** Bespoke Stain on Walnut



**MODEL:** R134-C3, Raised & Glazed Panels,  
 PCR Beading  
**FINISH:** Walnut



**MODEL:** R101, Raised Panels, PCA Beading  
**FINISH:** Wenge Stain on Oak



“*Sheen levels offer more than a decorative element in interior design, they can be used to create a space that has a distinct look and evokes the desired mood.*”

**MODEL:** R109, Flat Panels, ES3 Beading  
**FINISH:** T-124 on Oak, Matte Sheen





**MODEL:** R137, Flat Panels, PCA Beading  
**FINISH:** T-122 Stain on Walnut





**MODEL:** R100, Flat Panel, RS5 Beading **FINISH:** T-120 Stain on Oak  
**ARCHITRAVE:** TR2 **HARDWARE:** Northfield Collection, Satin Brass







# Classic Designs

SWD's Classic Collection can come in a variety of different designs and panel configurations to suit your requirements. As a bespoke manufacturer, we are incredibly versatile with what we can produce; the designs below are to give inspiration but if you have another design in mind then please get in touch with the team. In addition to the design, please choose a beading and panel profile to suit your style (page 38-39). All designs can incorporate a glazing style (page 95) with clear or opaque glass, and can be supplied non-fire rated, FD30 or FD60.





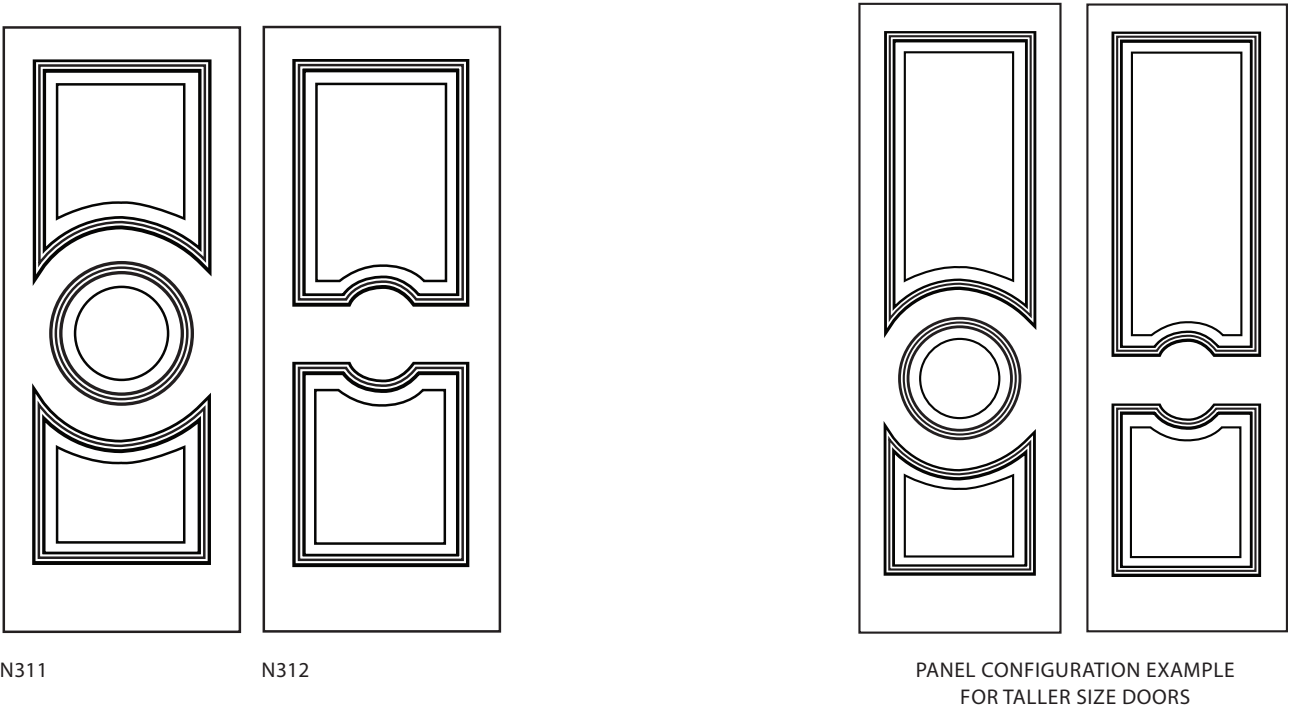
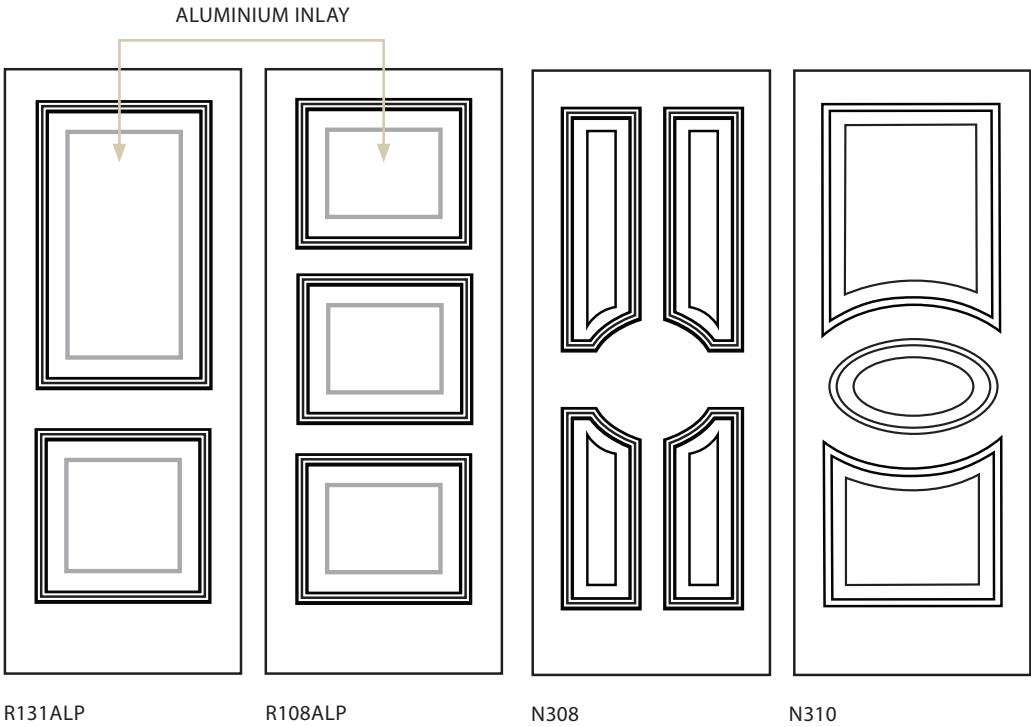


**MODEL:** R101, Flat & Glazed Panels, PCA Beading  
**FINISH:** T-122 Stain on Oak **HEIGHT:** 2700mm



# Classic Designs

Following the previous Classic designs, below will display more intricate and complex designs that can be achieved. Whether you are looking for a grand door such as the N311 with a beautiful rosette in the middle of the door, or you would like to integrate aluminium inlays, we can help you achieve this. You can view some of the inlay finishes available on page 84. All doors can be supplied non-fire rated, FD30 or FD60.





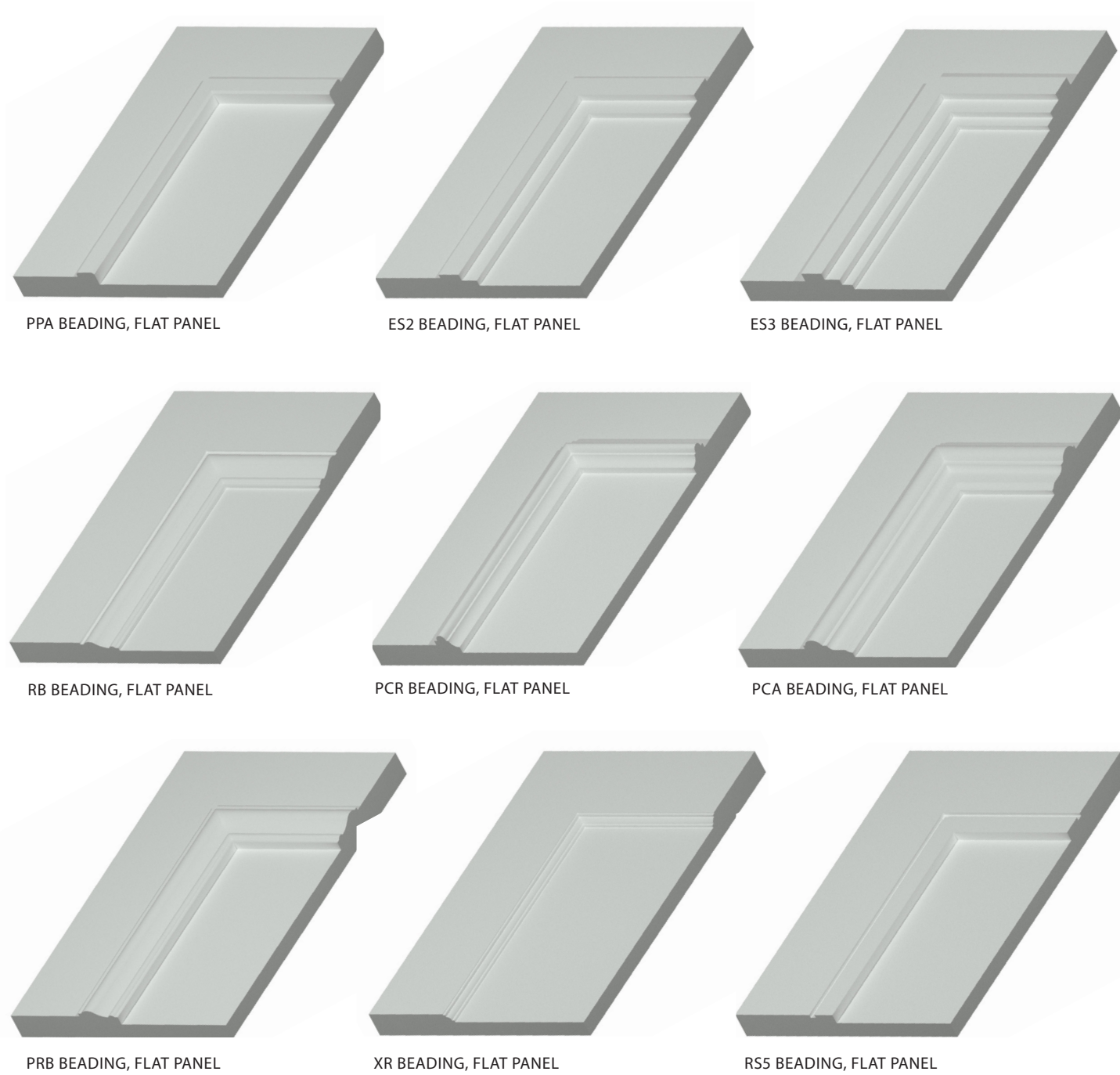


**MODEL:** R108ALP, Flat Panels, PCA Beading  
**FINISH:** T-120 Stain on Oak, Polished Aluminium Inlays



# Beading & Panel Profiles

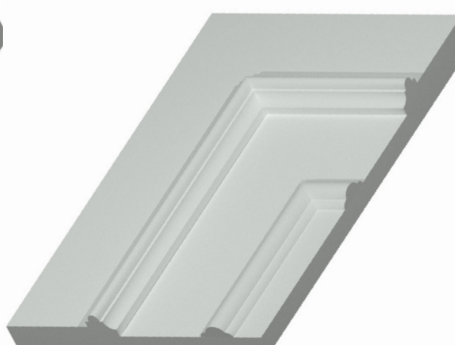
The doors in our Classic Collection can come with any of the below beading and panel profiles which includes a range of traditional and contemporary options to suit any interior style. The cross sections show how each beading profile looks on a flat panel or a raised panel. These beading types can also be used on glazed doors in any of our other Collections too. Our sales team will be happy to assist you in knowing which beading and panel types are best suited to specific door models. Bespoke beading profiles are available upon request.



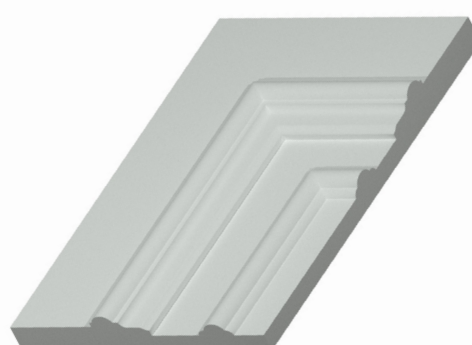




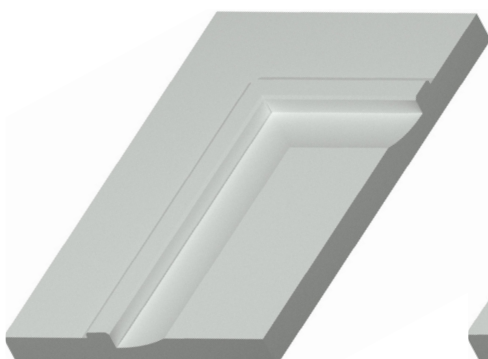
RB & INNER DECORATIVE  
BEADING



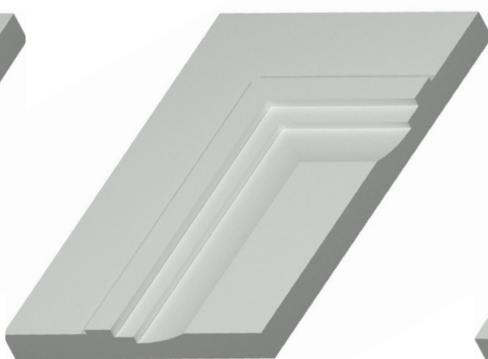
PCR & INNER DECORATIVE  
BEADING



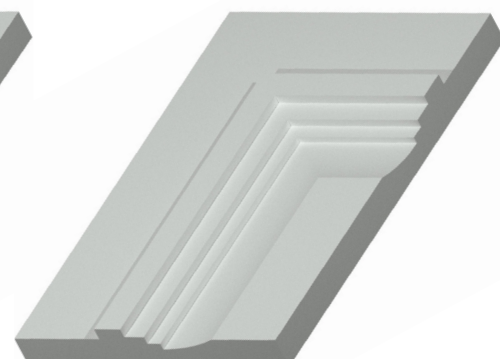
PCR & INNER DECORATIVE  
BEADING



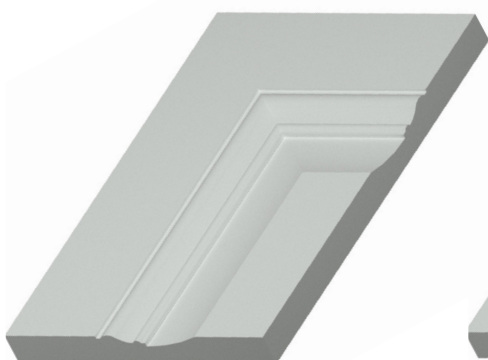
PPA BEADING, RAISED PANEL



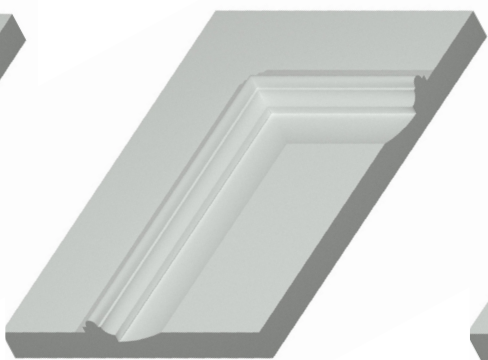
ES2 BEADING, RAISED PANEL



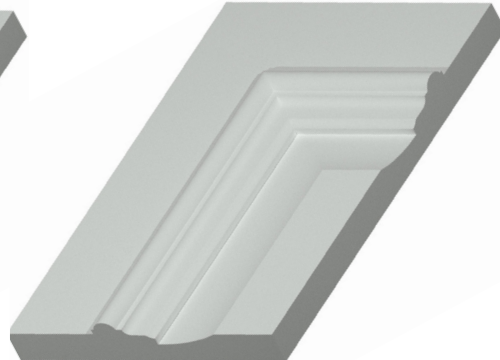
ES3 BEADING, RAISED PANEL



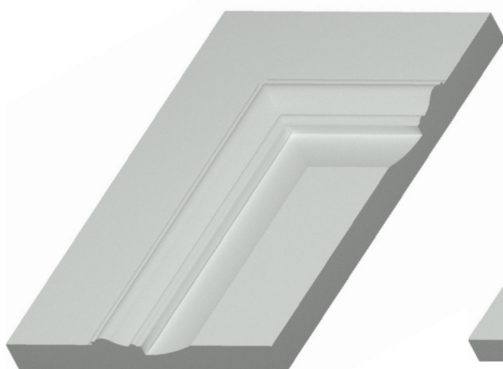
RB BEADING, RAISED PANEL



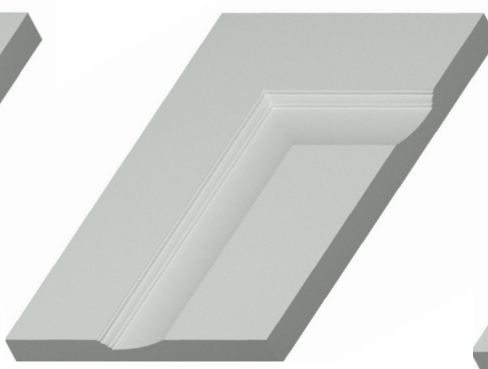
PCR BEADING, RAISED PANEL



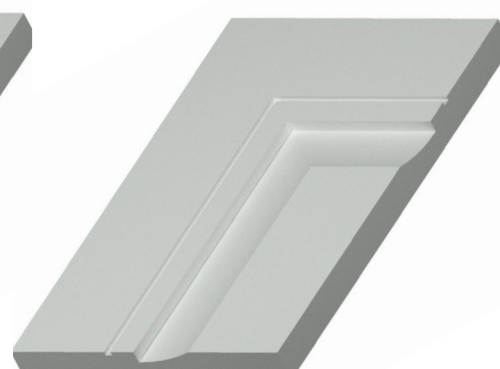
PCA BEADING, RAISED PANEL



PRB BEADING, RAISED PANEL



XR BEADING, RAISED PANEL



RS5 BEADING, RAISED PANEL



# Lattice

The doors in this Collection have been designed to create feature openings for projects looking for a statement design. The doors are glazed and interlaced with square or circular designs which overlay the glass. They can also be supplied with a solid panel instead of glass. The door itself can be produced in various natural and stained veneers as well as factory lacquer finishes and high gloss. The lattice work however can only be produced in a factory lacquer finish, metallic finishes and high gloss.





MODEL: Lattice Deco II  
FINISH: T-122 Stain on Walnut, Lattice RAL 1035





**MODEL:** Lattice Geo    **ARCHITRAVE:** Ogee  
**FINISH:** RAL 9005 High Gloss









**MODEL:** Lattice Deco  
**FINISH:** T-122 Stain on Walnut, RAL 1035









**MODEL:** Lattice Deco II  
**FINISH:** RAL 7024 Lacquer

Close up of Lattice Deco & Alexander Collection Lever in Antique Brass





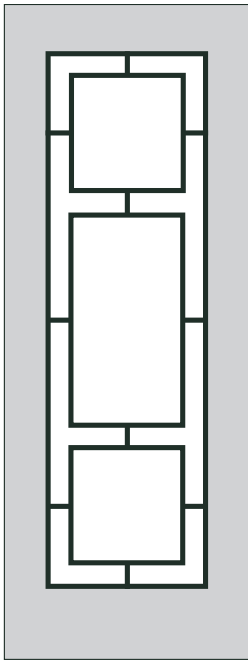


**MODEL:** Lattice Deco  
**FINISH:** T-122 Stain on Walnut, Lattice RAL 1035

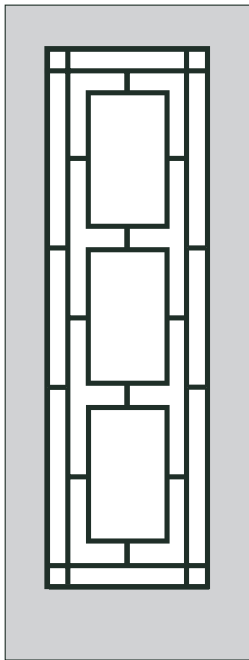


# Lattice Designs

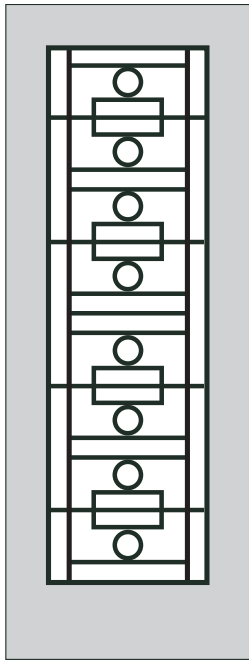
SWD's Lattice Collection can come in a variety of different designs to suit your requirements. As a bespoke manufacturer, we are incredibly versatile with what we can produce; the designs below are to give inspiration but if you have another design in mind then please get in touch with the team. All glazed designs can come with clear or opaque glass, and can be supplied non-fire rated, FD30 or FD60.



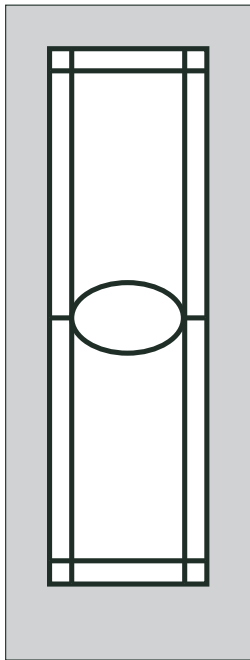
DECO II



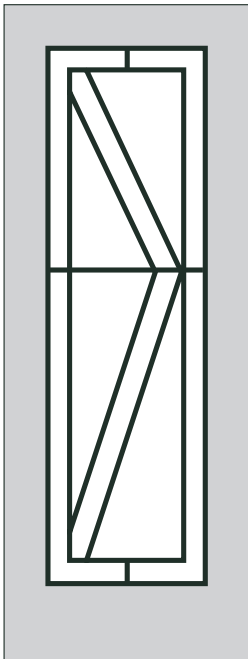
DECO



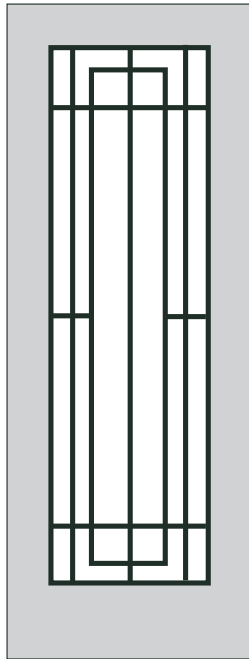
GEO



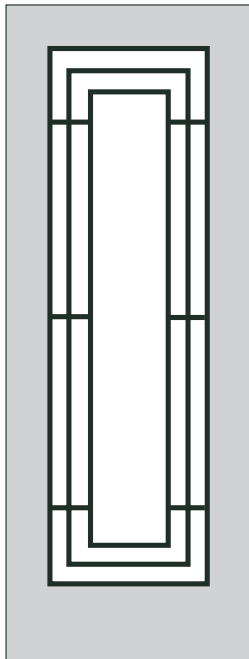
ELIPSE



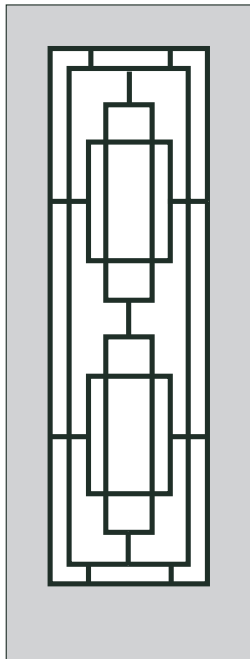
SETA



GRILLES



GRILLES II



GATSBY





**MODEL:** Lattice Grilles II (External Door)  
**FINISH:** RAL 9007 Lacquer



# Lacada

The minimal look at its finest. These doors were originally designed as a modern alternative to traditional panelled doors. The doors are essentially flush with the panels routed back into the face of the door. The tooling that we use can either provide the illusion of panels or a more contemporary design with V grooves. The doors in this collection can be finished in a factory lacquer, high gloss, or supplied primed to be painted on site.





MODEL: R100dec ARCHITRAVE: SW3  
FINISH: RAL 9003 Lacquer





**MODEL:** 1001dec **FINISH:** RAL 7004 Lacquer & High Gloss Strip  
**ARCHITRAVE:** TR2









**MODEL:** N301dec **FINISH:** RAL 9003 High Gloss  
**ARCHITRAVE:** Ogee







**MODEL:** N311dec  
**FINISH:** RAL 9005 & 9003 High Gloss  
**ARCHITRAVE:** SW3 with Plinth & Corner Blocks





**MODEL:** R137dec, Glazed Panels, PPA Beading  
**FINISH:** RAL 7012 Lacquer







“*This refurbishment project features our model R137dec up to 2270mm tall, with a mix of single & glazed double door sets, along with sliding doors with opaque glass. We pre-finished the doors & supplied the frames and three stepped architraves in a primed paper wrapped finish which allowed for a much smoother paint application.*”



**MODEL:** R137dec,  
Glazed Panels, PPA Beading  
**FINISH:** RAL 7012 Lacquer





**MODEL:** 1004dec  
**FINISH:** RAL 9002 Lacquer

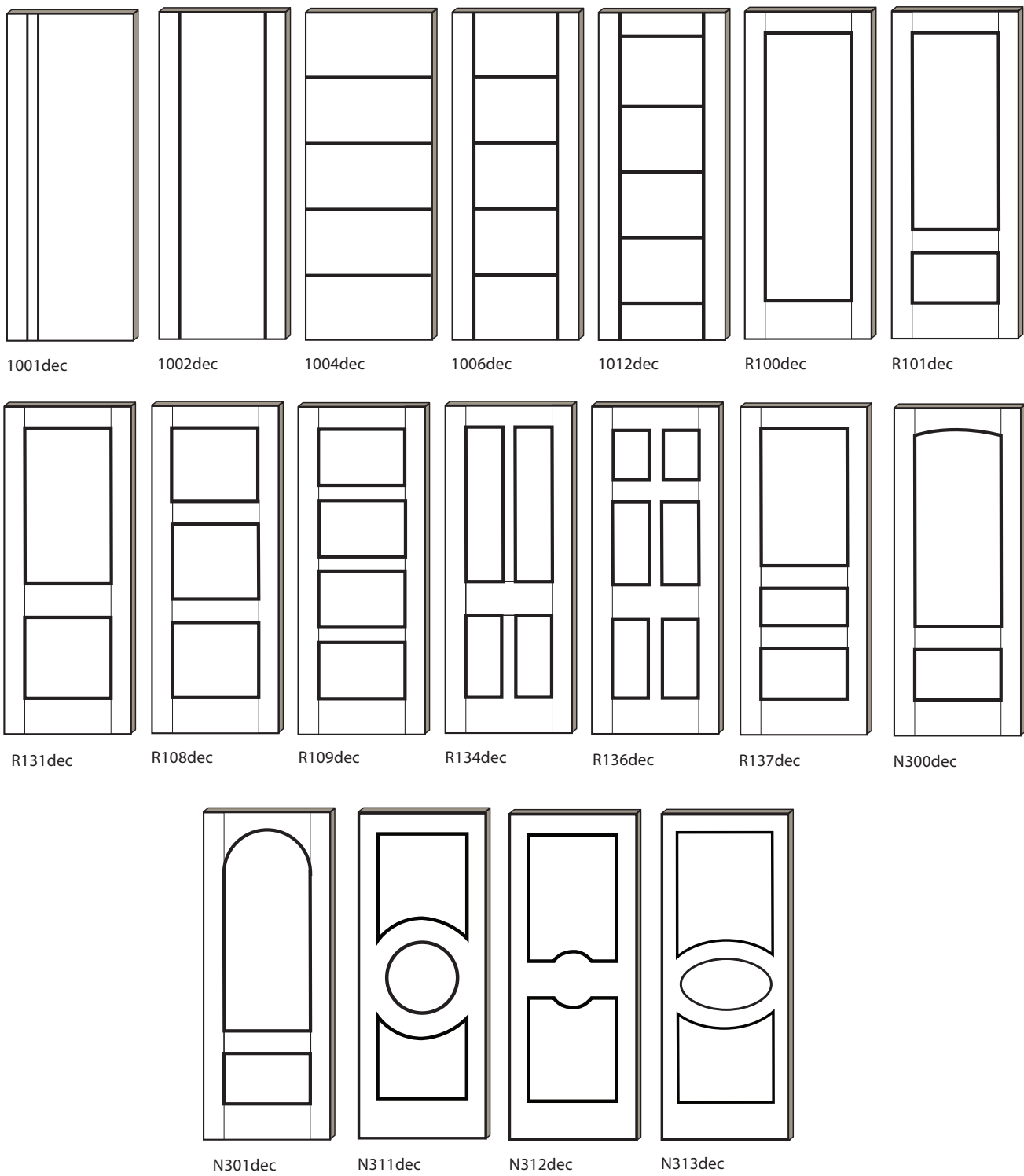


Close up of panel detail



# Lacada Designs

SWD's Lacada Collection can come in a variety of different designs to suit your requirements. As a bespoke manufacturer, we are incredibly versatile with what we can produce; the designs below are to give inspiration but if you have another design in mind then please get in touch with the team. All glazed designs can come with clear or opaque glass (page 95) and can be supplied non-fire rated, FD30 or FD60.







**MODEL:** R100dec, Glazed Panel, PPA Beading  
**FINISH:** RAL 9003 Lacquer



# Designer

The Designer doors comprise of various flush doors that use grain direction and veneer inlays to create a variety of interesting and contemporary designs. The inlays can contrast the door in a maple or wenge finish. All the Designer doors can be supplied in many natural veneers as well as stained finishes and high gloss.





**MODEL:** C25    **ARCHITRAVE:** SW3  
**FINISH:** Ash Grey High Gloss





**MODEL:** L550  
**FINISH:** Bespoke Stain on Birds Eye Maple





**MODEL:** L505  
**FINISH:** Ash Grey High Gloss

**MODEL:** S800  
**FINISH:** Light Grey Oak





“ This ultra modern London penthouse showcases the dramatic impact a flush door can have when tied together with matching frames, architraves and skirting. This seamless look creates the ultimate contemporary door set and contrasts beautifully with the light interiors. ”



**MODEL:** S800  
**FINISH:** Ash Grey





**MODEL:** C25  
**FINISH:** Bespoke Dual Stain on Oak





**MODEL:** C25 **FINISH:** Bespoke Dual Stain on Oak  
**ARCHITRAVE:** TR2









**HARDWARE:** Northfield Lever, Satin Nickel & Dark Bronze





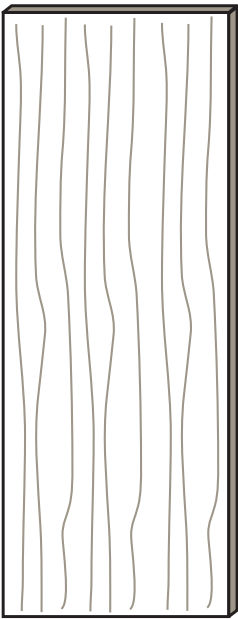


**MODEL:** C25 **FINISH:** Bespoke Dual Stain on Oak  
**ARCHITRAVE:** SW4



# Designer Designs

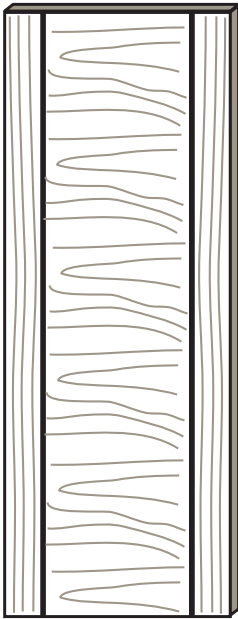
SWD's Designer Collection can come in a variety of different designs to suit your requirements. As a bespoke manufacturer, we are incredibly versatile with what we can produce; the designs below are to give inspiration but if you have another design in mind then please get in touch with the team. All glazed designs can come with clear or opaque glass (page 95) and can be supplied non-fire rated, FD30 or FD60.



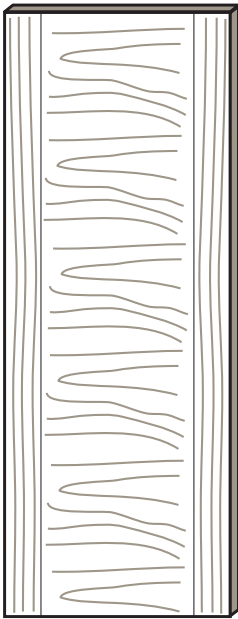
L505



L510



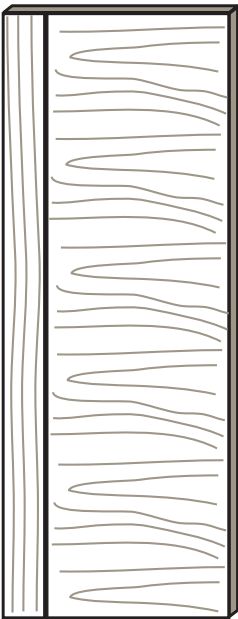
T600



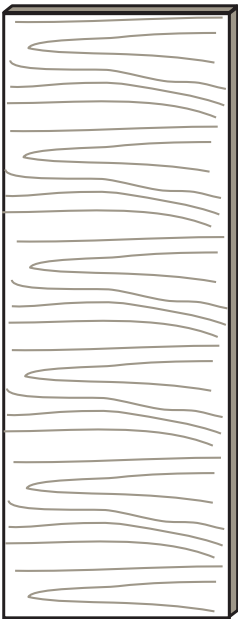
T600SG



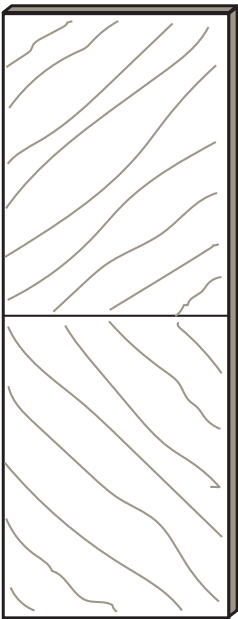
L550



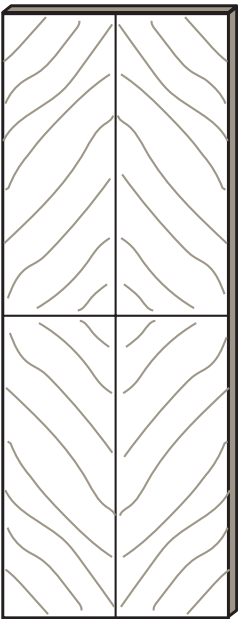
T700



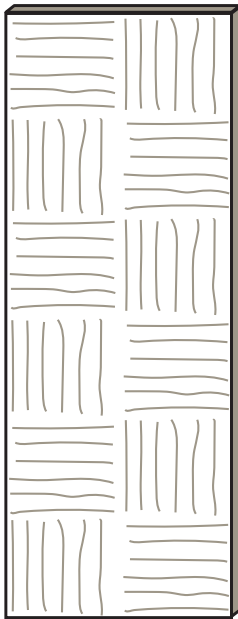
S800



C25



C27



C12





**MODEL:** S800    **ARCHITRAVE:** TR2  
**FINISH:** T-120 Stain on Oak



# Urban

The Urban doors incorporate aluminium inlays within the door which can be satin, polished, or bespoke plated colours such as bronze. The doors in this collection can be made in many natural and man-made veneers which can be stained or finished in high gloss or lacquered finishes.





**MODEL:** 155ALU   **ARCHITRAVE:** SW3  
**FINISH:** Wenge High Gloss & Light Grey Inset, Dark Bronze Inlay





**MODEL:** 150ALU  
**FINISH:** American Stain on Walnut, Satin Nickel Inlay









**MODEL:** 155ALU  
**FINISH:** Grey Choco High Gloss & Ash Grey Inset, Dark Bronze Inlay







**MODEL:** 850  
**FINISH:** Grey Choco, Polished Aluminium Inlay

**MODEL:** 150ALU, Solid (below) Glazed (right) Panel  
**FINISH:** T-120 Stain on Oak, Polished Aluminium Inlay







**MODEL:** 150ALU, Glazed Panel  
**FINISH:** T-120 Stain on Oak, Polished Aluminium Inlay



**MODEL:** 150ALU    **ARCHITRAVE:** TR2  
**FINISH:** Black Lacquer, Polished Aluminium Inlay





**MODEL:** 155ALU with Mirror Inset  
**FINISH:** NCS S 1502-Y High Gloss, Polished Brass Inlay



**MODEL:** 155ALU  
**FINISH:** Wenge, Satin Brass Inlay



**MODEL:** 150ALU  
**FINISH:** Walnut, Satin Aluminium Inlay





**MODEL:** 150ALU  
**FINISH:** American Stain on Walnut, Satin Nickel Inlay

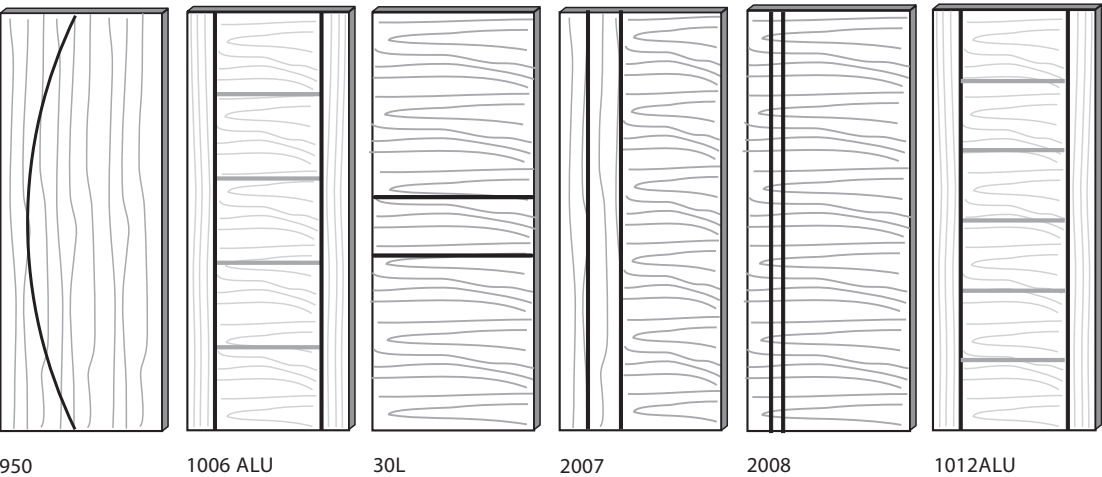
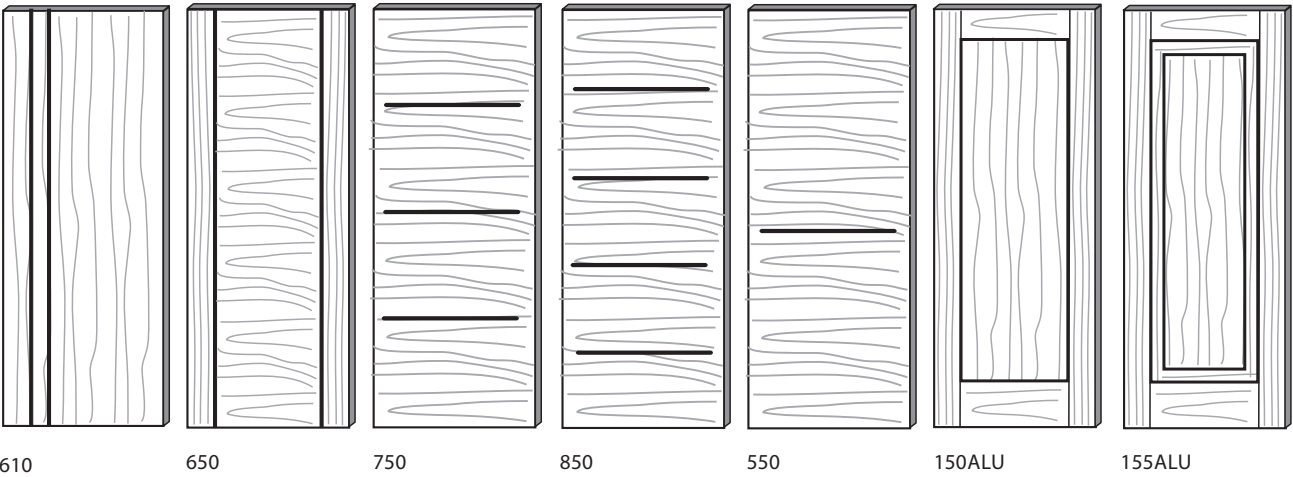






# Urban Designs

SWD's Urban Collection can come in a variety of different designs to suit your requirements. As a bespoke manufacturer, we are incredibly versatile with what we can produce; the designs below are to give inspiration but if you have another design in mind then please get in touch with the team. These models come with aluminium inlays in satin or polished as standard, or any of the below anodised finishes. All glazed designs can come with clear or opaque glass (page 95) and can be supplied non fire, FD30 or FD60.



## Inlays

The doors in the Classic and Urban Collections come with inlays in satin aluminium as standard, but can be upgraded to polished or anodised colours to suit your door hardware.







MODEL: 150ALU  
FINISH: American Stain on Walnut, Satin Nickel Inlay



# Natural

The Natural Collection consists of designs with subtle grooves made of solid wood in the same finish as the door. The doors in this Collection are all flush designs, and can be made in many natural veneers as well as stained finishes.





**MODEL:** 1004, Glazed Panels  
**FINISH:** Walnut





**MODEL:** 1006      **ARCHITRAVE:** TR2 with Plinth Blocks  
**FINISH:** Walnut









**MODEL:** 1004    **ARCHITRAVE:** TR2  
**FINISH:** Grey Choco



**MODEL:** 1004  
**FINISH:** Oak



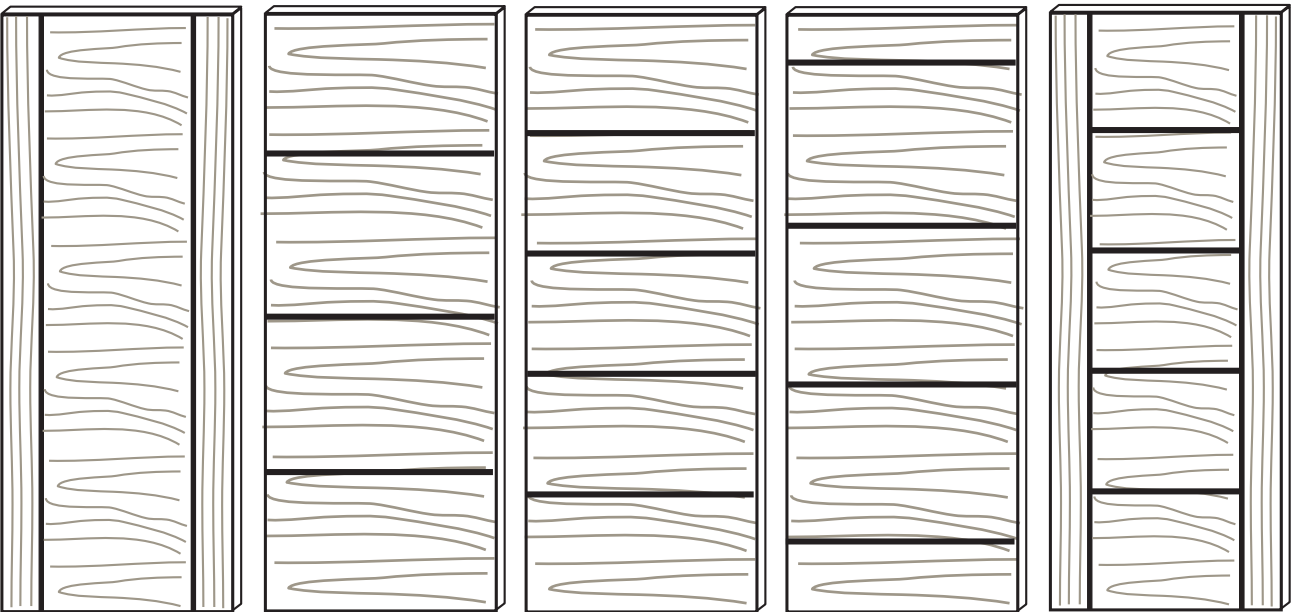


**MODEL:** 1004  
**FINISH:** Bespoke Dual Stain on Oak



# Natural Designs

SWD's Natural Collection can come in a variety of different designs to suit your requirements. As a bespoke manufacturer, we are incredibly versatile with what we can produce; the designs below are to give inspiration but if you have another design in mind then please get in touch with the team. In addition to the design, please choose a groove style from the following page. All glazed designs can come with clear or opaque glass (page 95) and can be supplied non-fire rated, FD30 or FD60.



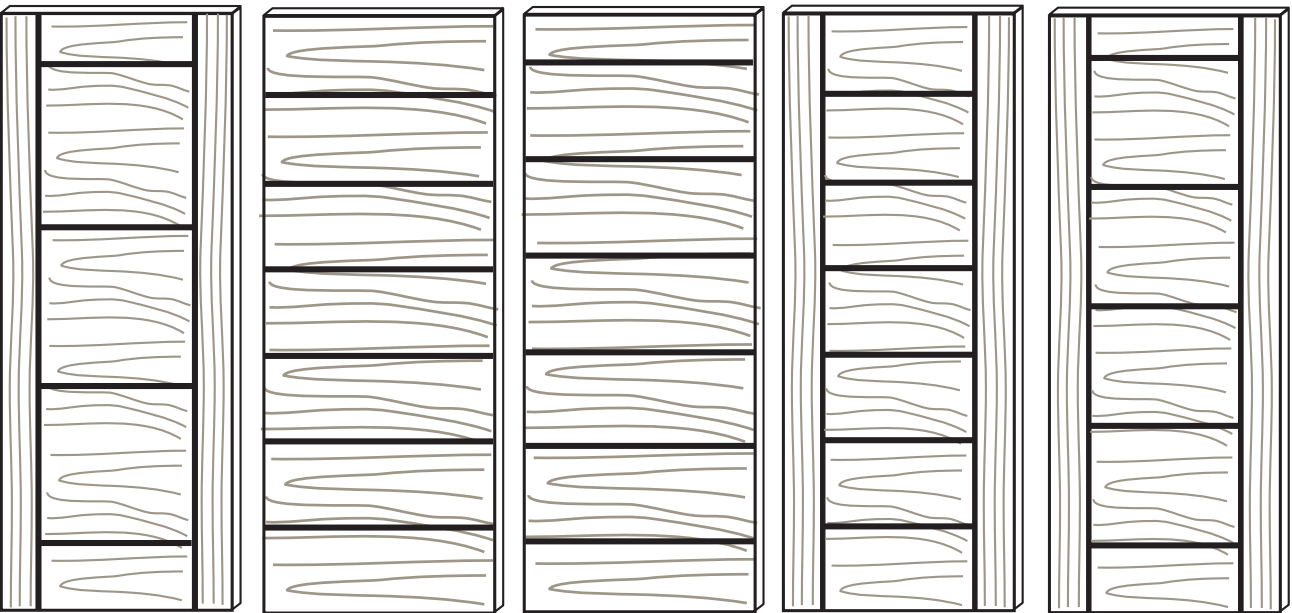
1002

1003

1004

1005

1006



1007

1008

1009

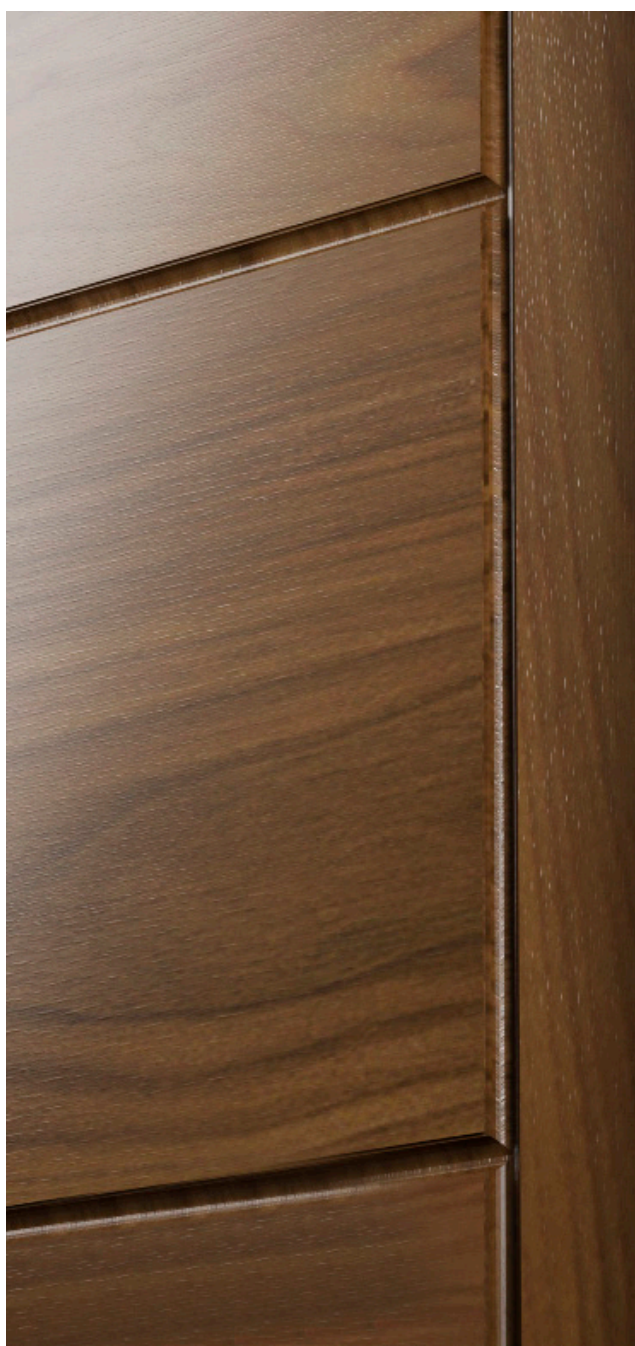
1010

1012



# Bevelled Grooves

Any of the doors in this Collection can come with either a V groove or an Omega groove. The V groove is supplied as standard at approx. 5 x 3mm, while the Omega is a wider U-shaped groove, approx 14 x 4mm.



V GROOVE



OMEGA GROOVE



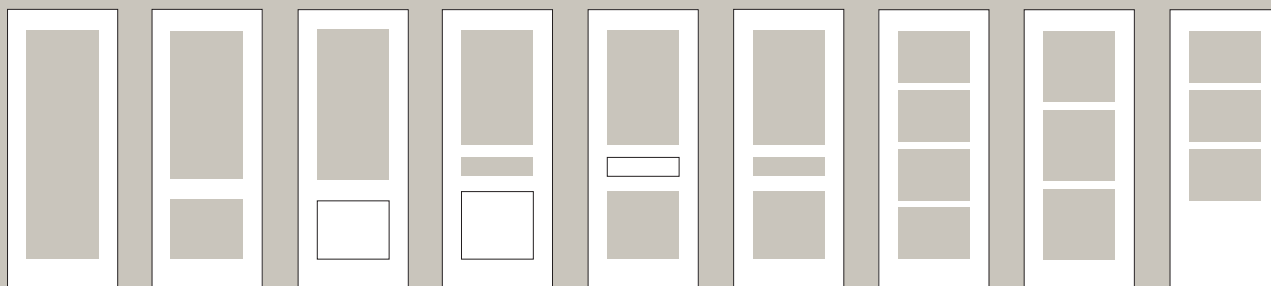


**MODEL:** R109, Glazed Panels, ES3 Beading  
**FINISH:** T-124 Stain on Oak



# Glazing

All doors from SWD are made to order which enables us to offer a huge range of glazing options. Some of the more popular options are shown here. Most of the glazing options can also be produced as a fire rated door. The types of glass available are: Clear toughened (Non-fire) / Opaque (Non-fire) / Bevelled (Non-fire) / Fire rated clear (FD30/FD60) / Fire rated sandblasted (FD30/FD60). Your glazed doors will need beading to hold the glass in place, please refer to page 38-39 to choose your beading profile.



A1

A2

A3

A4

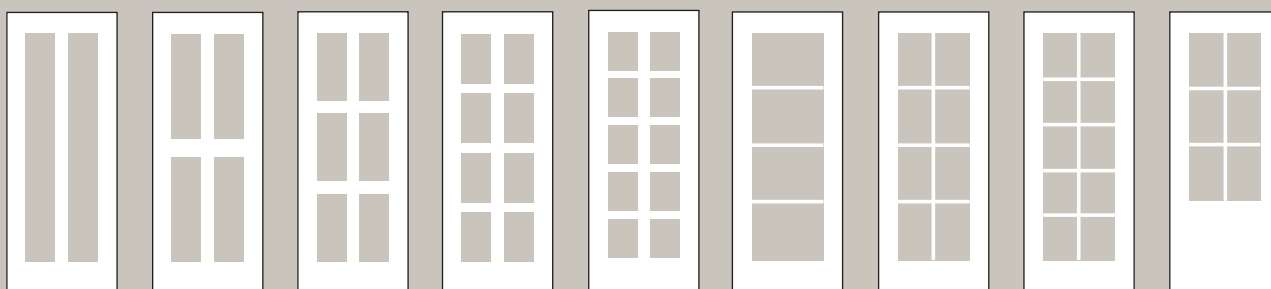
A5

A6

A7

A8

A9



A10

A11

A12

A13

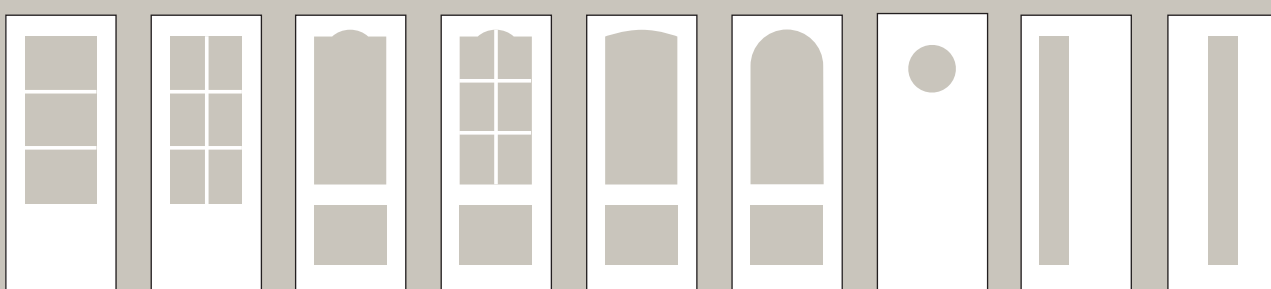
A14

B1

B2

B3

C1



C2

C3

D1

D2

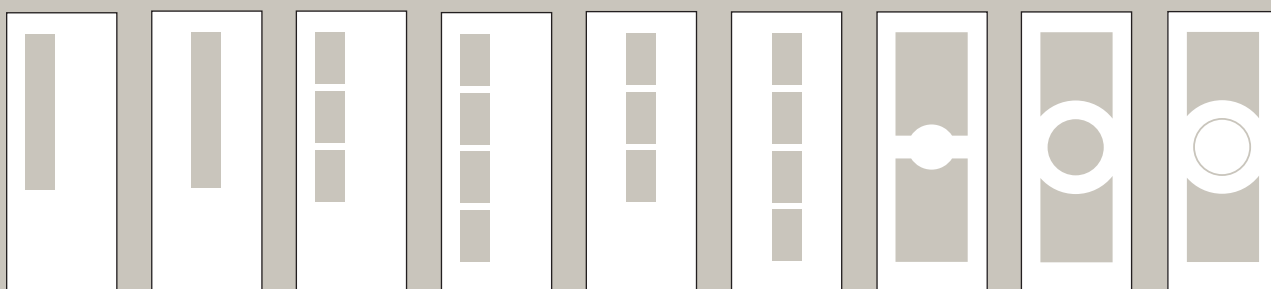
D3

D4

D5

E1

E2



E3

E4

E5

E6

E7

E8

F1

F2

F3



# Door Sets

SWD Bespoke door sets consist of the door leaf, a rebated door frame with acoustic gaskets, ironmongery and architrave (optional). Each door set is made to measure and will fit perfectly into each of your openings, saving you time on installation and therefore money on labour costs.

The door leafs will have all the hinges, gaskets and locks machined into the door at the factory with C&C machines. Fire doors will include intumescent strips also pre-machined.

A door set will benefit you in the following ways:

- Time saving
- Fewer labour costs
- Consistency & quality
- Purchasing power





**MODEL:** C25, Glazed Panels & RS5 Beading **FINISH:** Bespoke Dual Stain on Oak  
**ARCHITRAVE:** SW4 **HARDWARE:** Northfield Pull Handle, Satin Nickel & Dark Bronze



# Made to Measure

When purchasing new door sets, we can offer you a site survey which enables us to measure all of your openings and assess the exact requirements for a completely bespoke luxury service. Investing in a survey gives you absolute confidence that your doors are made to your exact specifications and eliminates scope for error and delay when installing. We also lend our experience and expertise to advise on solutions and options to meet any design requirements that you may desire. If a site survey is not suitable, we can carry out a virtual site survey via video call or we can let you know the information we need and your builder can supply this instead.

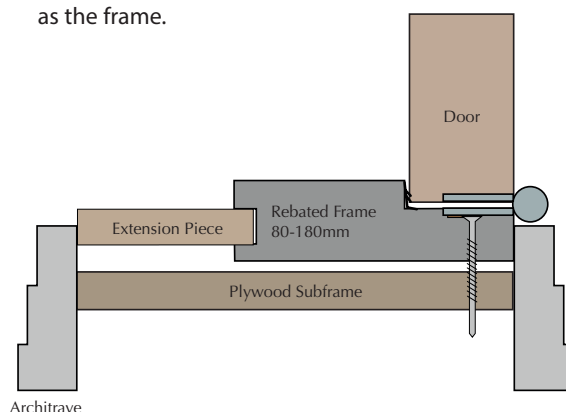






## Door Set Frame

Our standard door set frames are always rebated and made from moisture-resistant MDF, plywood or solid wood that can be supplied primed, wrapped in a matching veneer to the doors, or pre-finished in a lacquer or high gloss. As the frames are rebated and don't require a plant on stop, we as standard install acoustic gaskets that can come in black, grey, brown and white depending on the colour of your frame. It will also include intumescent material if fire rated doors are required. The frames will come made to size based on your wall thicknesses; the maximum width of the frames are 175mm depending on the finish; if the walls are wider than this we would supply a reveal board in the same finish as the frame.



## Door Set Ironmongery

Our door sets include full casement architectural locks and latches along with x4 hinges per door as standard, all of which are machined into both the door and frame. As all the machining is done at our factories with C&C machinery, ironmongery as standard will be supplied with a radius edge providing a clean, neat finish. Instead of a radius edge, square edged ironmongery can be used and machined into your door sets if you prefer. There are three main locks that we use with our door sets; a latch for non-locking doors, a bathroom lock fit for a handle and a thumb turn, and a euro profile sash lock fit for a handle and a cylinder for any doors you wish to be locked with a key. Alternative ironmongery can be specified such as deep-set latches/locks which are specifically designed for mortice knobs as well as concealed hinges.



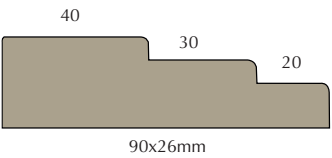


# Veneered Architrave & Skirting

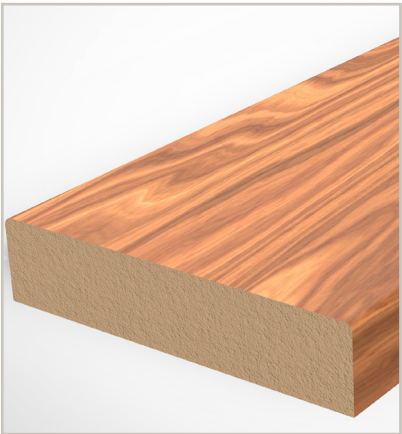
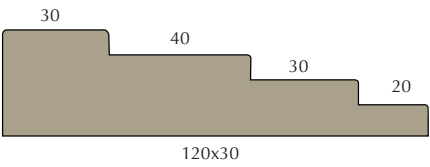
SWD can supply architrave and skirting profiles which can be veneered to match your doors and frames, resulting in a seamless and impressive look. The images below show some of the standard profiles available, however any of the profiles on the following page (102) are also available as an architrave either in MDF or solid wood, or as skirting. Both skirting and architraves can be made in different widths and thicknesses.



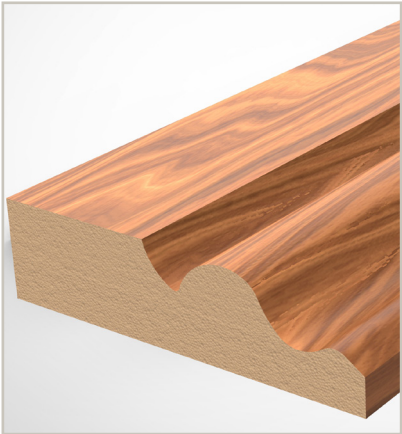
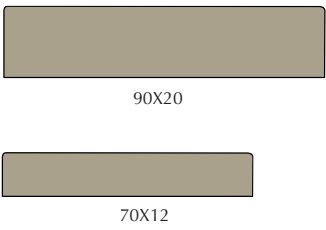
SW3, 90MM WIDTH



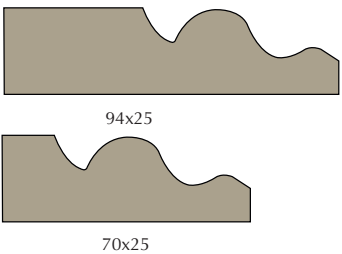
SW4, 120MM WIDTH



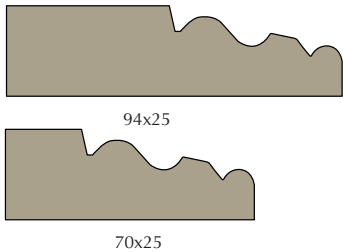
TR2, VARIABLE WIDTHS



OGEE, VARIABLE WIDTHS



OGEE 2, VARIABLE WIDTHS







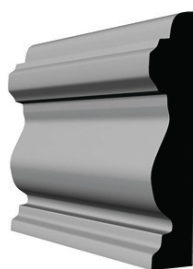
**MODEL:** R100, Flat Panel, RS5 Beading  
**FINISH:** T-120 Stain on Oak

**ARCHITRAVE & SKIRTING:** TR2



# MDF & Solid Wood Architrave & Skirting

We can supply a huge variety of different architrave and skirting profiles, some of which are shown below. These can come in primed moisture resistant MDF or solid wood, for example walnut, oak, beech, tulip wood or sapele. Plinth blocks and corner blocks are also available in various designs and sizes.



QUEEN ANNE



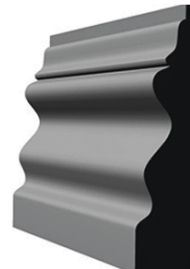
SKYLINE



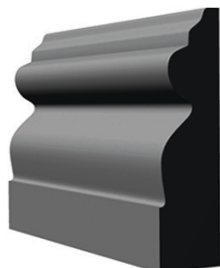
VICTORIAN



EDWARDIAN



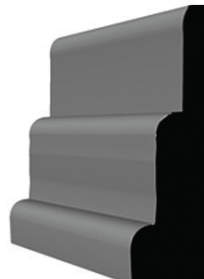
ELIZABETHAN



GEORGIAN



REGENCY



HENLY



SMALL HENLEY



REBATE 1



REBATE 2



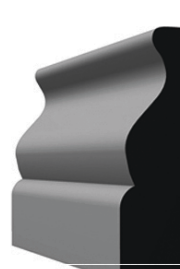
STEP BULLNOSE



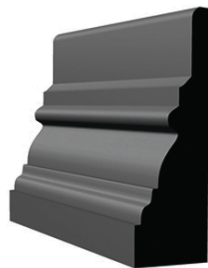
BULLNOSE



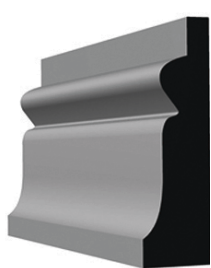
PENCIL ROUND



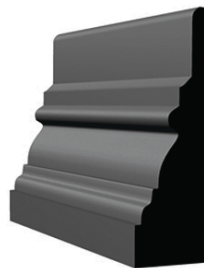
OGEE



CONWAY



CHELSEA



WARICK



1 STEP

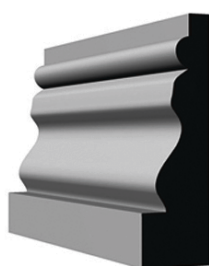


2 STEP





3 STEP



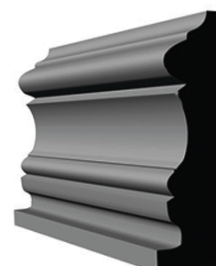
KENSINGTON



LAMBS TONGUE



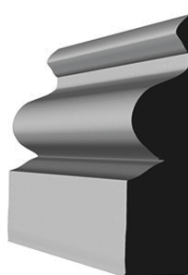
OVOLO



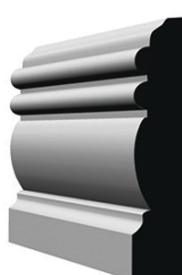
DERBY



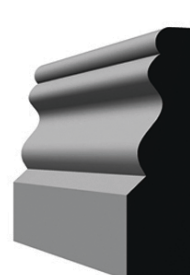
SMALL DERBY



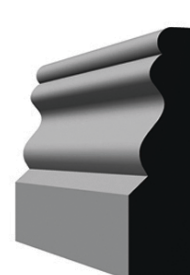
ANTIQUE



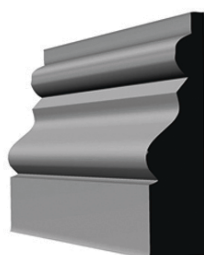
WINCHESTER



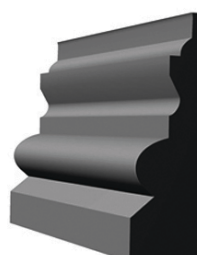
BUCKINGHAM



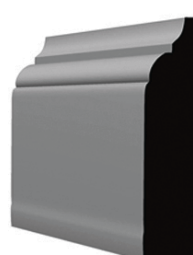
ESSEX



TUDOR



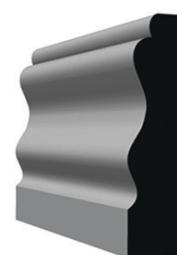
BALMORAL



MODERN



KENILWORTH



QUEEN



# Door Systems







**MODEL:** R137, Flat Panels, RB Beading  
**FINISH:** RAL 9003 Lacquer



# Sliding Doors

A cage system is a complete kit which includes the top track, the guide pin and the framework for the pocket itself which is boarded over and then plastered. We use only the best cage systems on the market, which have been tried and tested in many of our projects over the years. See below the three main types of systems and how they work. All sliding doors can be supplied non-fire rated and FD30.



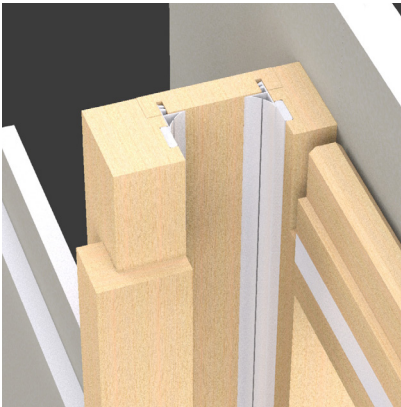
CONCEALED FRAME OVERVIEW



CONCEALED JAMB DETAIL



SHADOW GAP OVERVIEW



SHADOW GAP JAMB DETAIL



VISIBLE FRAME OVERVIEW



VISIBLE JAMB DETAIL





If your sliding door needs to be fire rated, we can supply you with a system tested to resist a fire for 30 minutes, which comes with all the jambs and intumescent materials already installed into them.

Your sliding door should be no thicker than 44mm including the beading as there is only a 5mm clearance inside the cage, therefore beading can't be used which protrudes from the door face. We have a number of recessed beading profiles we use for this purpose (page 38-39).

The cage systems come with a 95mm width cage and can be single boarded to give a total width of 125mm or double boarded both sides to give a wall thickness of 145mm. We would recommend the latter if you have the space as the wall will be more solid.

Large door leafs can be catered for as the cage systems can carry a single fire door leaf up to 2850x1500mm, and the double sliding kit will take two leafs of 2850x1111mm each.

Additional features can be purchased on all FD30 and non-fire doors such as a soft closer which ensures a smooth operating action, and a touch latch which enables the door edge to be pushed in so the door pops out of the pocket.



# Frameless Doors

SWD offer a solution for perfectly hidden doors that have no architrave and appear hingeless.

The door and frames can be supplied white primed for on-site finishing or powder coated to any standard RAL colour. All the systems are made to order with a lead time of approx. 8 weeks.

All frameless doors can be supplied non-fire rated, FD30 or FD60.

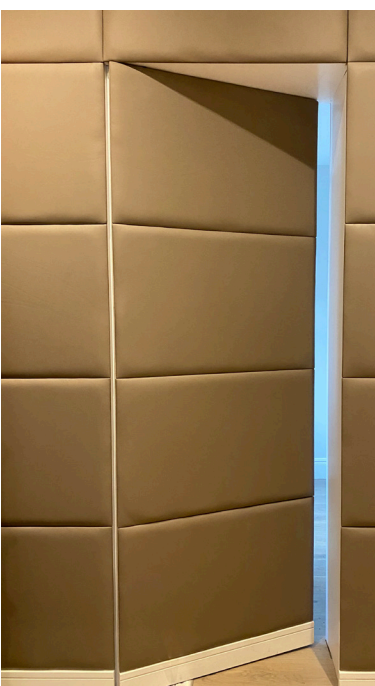


The system is made up of a split-type jamb produced from steel, which simply wraps around the end of a finished wall structure. Once fixed in place, the frame can be plastered over with the rest of the wall, giving an unbroken wall surface right up to the door and creating a seamless effect with the door being concealed with the wall.

There are two types of frameless doors.

An **inward opening door** which is a rebated 54mm door and works with a floor spring and pivot, which is the ideal option if you are looking for a completely hidden door. The inward system will have the door flush with the wall and opening into a room - the external face of the door can therefore be clad with various innovative options which can remarkably blend the door into a wall – SWD have carried out projects where our clients have used mirrors, various textured wall papers and leather panels.

The second type is the **outward opening door** which is flush with the wall on the outer side. This uses concealed hinges and the same metal frame system as above. This door will require something to open the door, typically a flush pull, so it is not a truly secret door. If a handle or flush pull is not required, a heavy duty magnetic push latch can be fitted. An overhead closer can be added.



INWARD OPENING SYSTEM

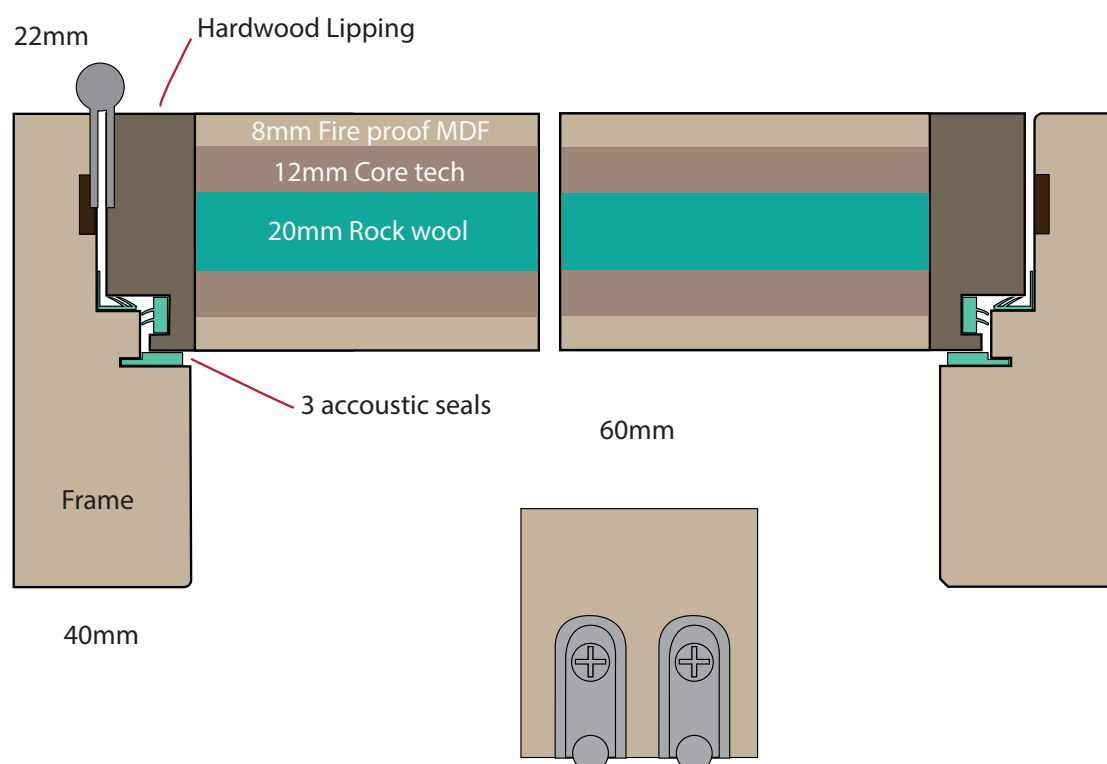


OUTWARD OPENING SYSTEM



# Acoustic Doors

We offer top-of-the-range acoustic doors that can replicate the highest level in soundproofing. All of our doors come with a good acoustic rating naturally (approx. 32db on fire doors) as we use acoustic and smoke seals in our rebated frames as standard, however if you are looking for even better sound ratings then we will produce a 60mm thick door with Lorient acoustic seals and drop-down seals which achieve soundproofing of up to **43 decibels**. All acoustic doors can be supplied non-fire rated, FD30 or FD60.



Acoustic doors create better spaces and privacy by giving each room the quiet to create your desired atmosphere and environment. Acoustics are measured in decibels; loud speech can read around 60 decibels, a vacuum cleaner can hit 70 decibels and a rock band would be over 110 decibels.

Most manufacturers sell doors with a low acoustic rating of around

29 decibels. At SWD, our Lorient acoustic seals and drop-down seals have achieved soundproofing of up to 43 decibels. An acoustic rating of this level would make loud speech in the next room muffled & incomprehensible.

Our flush contemporary doors are able to achieve the best ratings in soundproofing, and, fit in seamlessly to the wall for an unbeatably modern

and stylish look. We have used these sleek designs in a recent project based in Dubai where the doors were 60mm thick and had rebates in both the door and frame, three acoustic seals and two drop down seals. These SWD state-of-the-art doors achieved an excellent acoustic rating of 43 decibels.



# PAS24 Doors

PAS24 is a minimum British standard regarding the security of external door sets, apartment entrances and windows. If a door set is certified to PAS24, it means that the production of your door has been monitored and tested by a UKAS accredited certification body which ensures compliance with a series of tests. These tests ensure that your PAS24 door set meets building regulations and the minimum level of security seen fit for your particular dwelling.



Constructed with a secure fire rated core, a rebated frame and selected quality ironmongery, our PAS24 doors are perfect for internal use where enhanced protection is required such as an apartment entrance door.

These are available in a finish of your choice, 33dB acoustic reduction and FD30 fire performance.

PAS24 door sets will be supplied pre-hung in a 40mm rebated door frame. The following door furniture will be included; x2 pairs of stainless-steel hinges, a multi-point locking system, a euro profile key escutcheon, key-thumb cylinder, a bat wing smoke seal around the door frame and a drop-down seal. Additional door furniture/ accessories such as handles, door closers (concealed or visible), spyholes, letterboxes etc are not included and will carry additional charges.

We have also tested with motorized electric multipoint locks that will enable you to open the doors with bluetooth technology which will include a smart phone.

The range of door designs SWD can offer will be up to 2500 in height and can have panelled designs flush doors with grooves or inlays.

Also the multipoint lock we use can accommodate handles in any finish or even no handles if required. You won't need to use an unsightly multi-point security handle with our PAS24 door sets.



# Wardrobe Doors

If you are looking for wardrobe doors to complement or match your internal doors, then we can supply you with thinner doors that can be used as both hinged or sliding. Using SWD for your wardrobe doors will ensure continuity of the quality and finish throughout.





# Finishes

At SWD we pride ourselves on producing unique finishes that you won't find elsewhere on the market. Our factories use premium wood veneers and can produce exceptional stains, uPV lacquers and high gloss, all of which provide a highly durable and long lasting finish to complement the quality of the doors we produce.

Here you can view a small sample of the different finishes we offer. We are always developing new stains and so not everything is shown in our brochure.

Please visit our showroom or speak to a member of staff if you wish to discuss other possibilities, or would like a sample of any of our finishes sent to you.





**MODEL:** R137, Flat Panels, PCA Beading  
**FINISH:** T-122 Stain on Oak



# Natural & Man-Made Wood

The rich natural lustre tones and grain of timber creates a warmth that cannot be achieved with any other material, which is why we carry a large selection of veneers to choose from. As well as natural veneers, we offer a range of man-made veneers for a more contemporary look and feel.



MAPLE



OAK, QUARTER CUT



OAK, CROWN CUT



OAK ECO, QUARTER CUT



OAK ECO, CROWN CUT



CHERRY



SAPELE, CROWN CUT



LIGHT CHOCO



ZEBRANO



BUBINGA



ETIMOE



WALNUT



GREY CHOCO



ASH GREY



EBONY



WENGÉ



# Stained Wood

SWD boasts a huge range of stains that can be applied to our doors, frames, architraves and even skirting. The stain is applied by hand to our natural real wood veneers which can be closed or open pore depending on the look you want to achieve. For oak veneers, there is the option of either crown or quarter cut, the latter provides a straighter grain look. All of our finishes can come in a variety of sheen levels, these are 5% (matte), 15%, 20-30% and 100% high gloss. As standard we offer 15% but please let us know your preferred option.



ARB ON OAK, CROWN CUT



BH ON OAK, CROWN CUT



OPW ON OAK, CROWN CUT



WHITE & GREY ON OAK, CROWN CUT



TT STAIN ON OAK, CROWN CUT



T-120 ON OAK, CROWN CUT



T-121 ON OAK, CROWN CUT



T-122 ON OAK, CROWN CUT



T-124 ON OAK, QUARTER CUT (4 COATS)



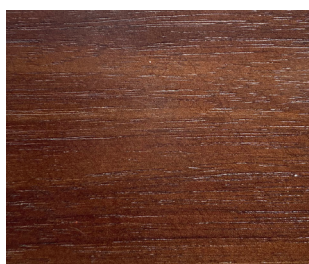
T-124 ON OAK, QUARTER CUT



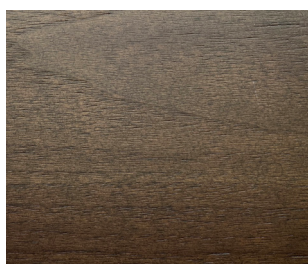
T-127 ON OAK, CROWN CUT



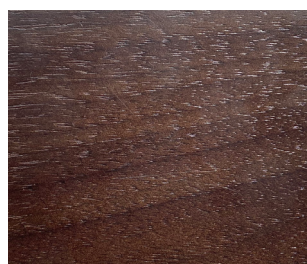
WENGE ON OAK, QUARTER CUT



AMERICAN WALNUT



OPW ON WALNUT



T-122 ON WALNUT



T-124 ON WALNUT



# Lacquers

A hard wearing and durable lacquer is applied to create a smooth finish on your door in any RAL or NSC colour of your choice, to suit your design scheme. The lacquer is extremely durable and is offered in an ultra matte, satin (15% sheen), or high gloss (100% sheen). As standard, a lacquered finish is supplied with a smooth appearance, however if you would prefer to keep a more natural wood look then we can veneer the door with oak before applying the lacquer to have the grain visible.



**MODEL:** R109, Glazed Panels, ES3 Beading  
**FINISH:** NCS S 0500-N Lacquer with Grain Showing



**MODEL:** R137dec  
**FINISH:** RAL 7012 Lacquer



# High Gloss

SWD specialise in producing the opulent 'piano' high gloss finish. We produce these finishes in any RAL or NCS colour of your choice. The process includes priming and sanding the door several times with up to 8 coats of primer to achieve a perfectly flat surface to finish on. Multiple layers of high gloss lacquer are then applied and buffed by hand in between each application. High gloss finishes are also available over natural and man-made veneers which will elevate your doors to replicate the highest quality gloss furniture and joinery.



**MODEL:** R108ALP, Flat Panels, ES3 Beading  
**FINISH:** RAL 9005 High Gloss with Polished Aluminium Inlays



**MODEL:** R137, Bespoke Panels & Beading  
**FINISH:** RAL 9005 High Gloss



# Hardware

Did you know? Many years ago SWD originally began as a door ironmongery supplier before we realised there was a niche in the market for bespoke luxury doors. That being said, we have a wealth of experience with hardware and understand that it is not purely functional, it allows you to add personality and detail to your aesthetic that others may overlook. Hardware is an important part of the process when choosing your doors and can be quite daunting as there are so many options out there, however our experienced sales team can assist you in choosing the most suitable products for your project from our vast number of suppliers.





**MODEL:** C25   **FINISH:** Bespoke Stain on Oak  
**ARCHITRAVE:** SW4   **HARDWARE:** Bespoke Knurled Flush Pulls, Satin Nickel & Dark Bronze



# SWD Bespoke Hardware

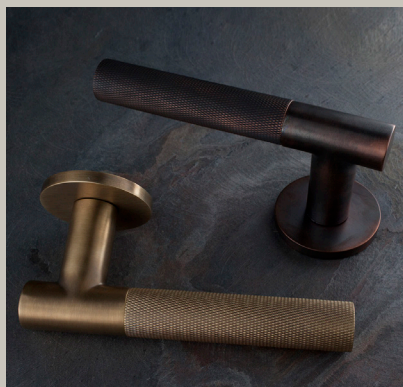
Our new range of bespoke hardware has been developed to complement our unique finishes and oversized doors. All our hardware is produced from high-grade solid brass and is made here in the UK, plated in an array of different bespoke finishes to meet your requirements (see page 129).

Our lever handles are larger and heavier than most other handles on the market to suit our larger doors, with levers approx. 150mm long and on a 55mm rose, weighing up to a kilo per handle.

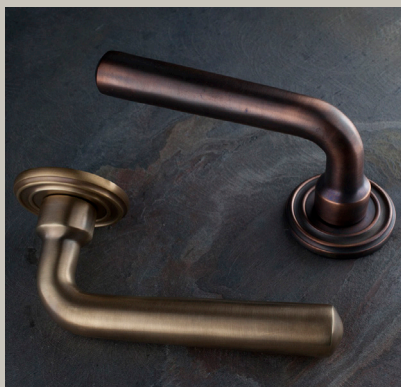


NORTHFIELD LEVER, SATIN NICKEL





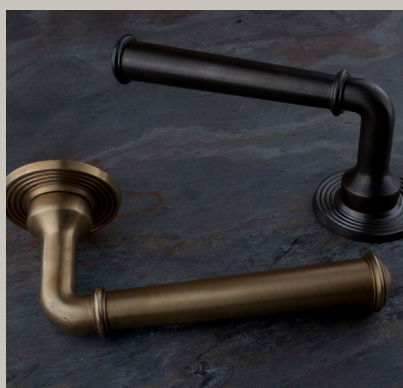
ALEXANDER



BEVERLEY



BROOKLAND



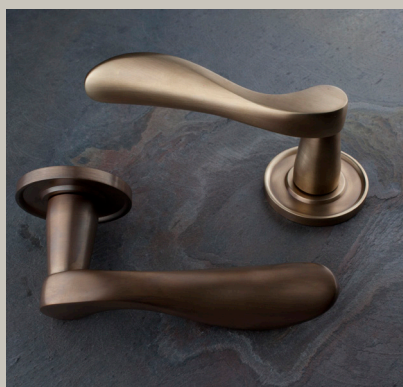
CHARLOTTE



CHURCHFIELD



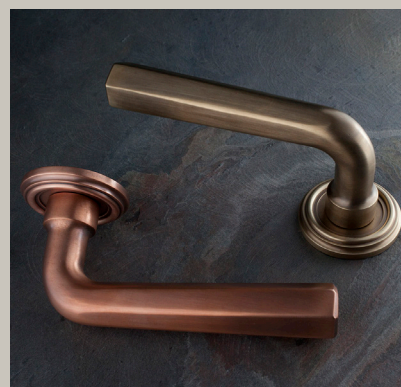
SWINLEY



ELGIN



HEATH



KINGSWOOD



LATIMER



SOUTHFIELD

More collections on the  
following page



## Northfield Collection



## Olivia Collection





## Hadley Collection



## Plaza Collection



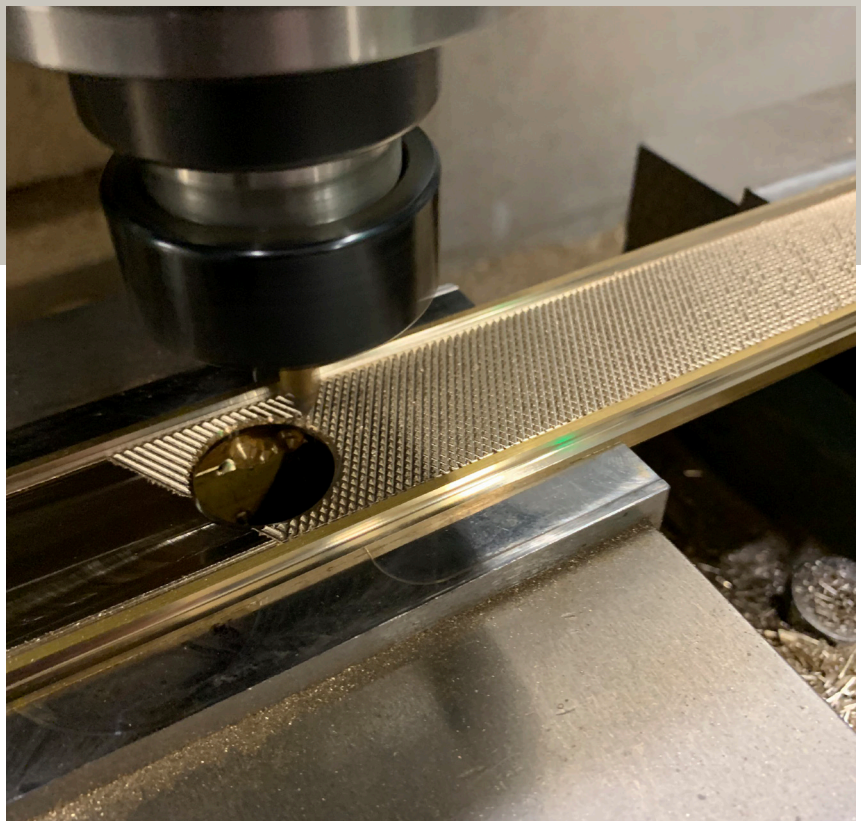


# Bespoke Service

At SWD we want to make every client's vision a reality, and so we offer the complete bespoke package with both our doors and hardware, being able to bring your ideas to life from a simple sketch. We offer a range of services including 3D renders, matching a bespoke finish, and designing products to fit your specification. All of our bespoke hardware is made from solid brass as seen below, using a combination of old school and the latest manufacturing methods to achieve a superior quality. All our products are manufactured in the UK and exquisitely finished by hand.



SOLID BRASS BLOCK



KNURLED BACKPLATE



# Renders

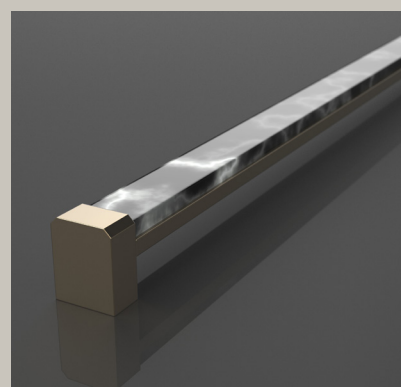
Below shows some of the renders we have made for previous projects, including a boutique hotel and client based in California. If you choose a bespoke design we will always provide you with a very realistic 3D render to ensure the product meets your expectations prior to manufacture.



PULL HANDLE ON BACKPLATE



PULL HANDLE ON BACKPLATE



PULL HANDLE



MORTICE KNOB



MORTICE KNOB & BATHROOM TURN



MORTICE KNOB & STD ESCUTCHEON



PULL HANDLE PAIR



BATHROOM TURN & RELEASE



EURO ESCUTCHEON



# Bespoke Hardware Projects



LEVER ON BACKPLATE, POLISHED NICKEL



RECESSED FLUSH HANDLE, POLISHED NICKEL



LEVER ON BACKPLATE, DARK BRONZE



PULL HANDLE SET, ANTIQUE BRASS





MORTICE KNOB: ANTIQUE BRASS, SATIN NICKEL, POLISHED BRASS, DARK BRONZE



LEVER HANDLE ON ROSE: POLISHED BRASS, ANTIQUE BRASS, SATIN BRASS



# Plated Finishes

With so many different handle finishes on the market today such as antique brass and dark bronzes, we feel it is important to offer our clients versatility in regards to the finish of the door furniture that is supplied with their door sets. We are able to supply a range of bespoke finishes so that all door furniture used on the doors can tie in seamlessly; this includes the hinges, strike and keep plates and also the screws, all of which are visible on the edge of the door and door frame. Going a step further, we also have clients that wish to match the door furniture with their light switches which can achieve complete consistency around the property.



DARK BRONZE HINGES & STRIKE/KEEP PLATES



ANTIQUE BRASS HINGES & STRIKE/KEEP PLATES





MATT BLACK



DARK BRONZE



RUSTIC BRONZE



IMITATION BRONZE



ANTIQUE BRONZE



OLD BRONZE



LIGHT SATIN BRONZE



POLISHED BRONZE



SATIN BRASS



POLISHED BRASS



POLISHED NICKEL



SATIN NICKEL



# Contact

## Design Consultation



We'd love to discuss your project in person and help bring your ideas to life; we offer extensive knowledge and expertise in both technical and design aspects to ensure we create the best possible outcome for your project.

To discuss your requirements in more detail or book an appointment to visit our impressive 2,500sq ft showroom please contact us using the details below:

<b>CALL</b>	01932 851081
<b>EMAIL</b>	<a href="mailto:sales@swdbespoke.com">sales@swdbespoke.com</a>
<b>VISIT</b>	15 Island Farm Avenue, West Molesey, Surrey, KT8 2UZ, UK
<b>SOCIAL</b>	@swdbespoke



# Sustainability

We work closely with our suppliers to ensure we deliver to the highest standard every time. Our suppliers endeavour to ensure that all materials within the construction are sourced responsibly from renewable sources for minimal impact to the environment.





SWD

B E S P O K E

*Luxury Doors for the Finest Homes*